



# KansasHealthMatters

How to Address Your Patients'  
Socio-Economic Needs



Provider barriers to patient care



# Social Determinants of Health

Work



Live

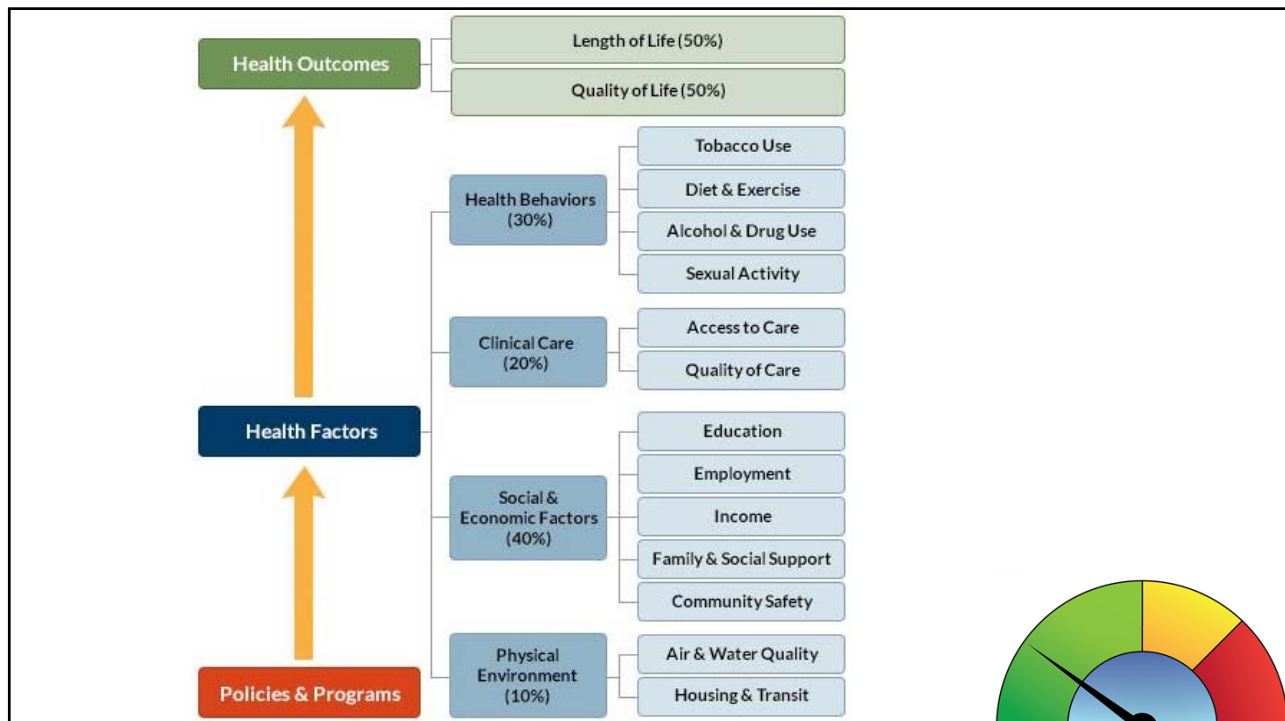


Where you...

Play



Pray



What tools can we use to understand the patient context?



# KansasHealthMatters

- Data for all 105 Kansas counties
  - County
  - City
  - Zip Code
  - Census Tract

Patient barriers to healthcare= fewer patients = ???



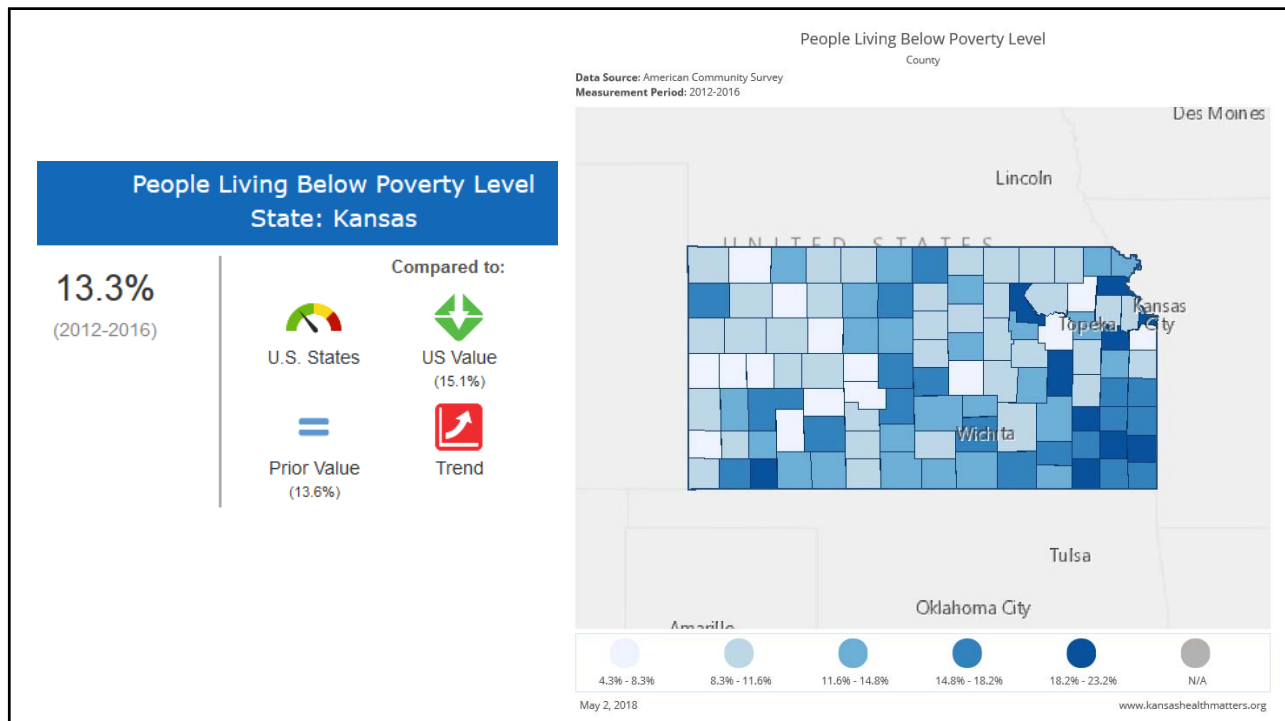
Issue #1: Missed or delayed appointments

Potential reasons?



# KHM Indicators Related to Transportation

<b>People living below poverty level</b>	Measure of poverty which can indicate ability to afford gas
<b>Renters spending 30% or more of income on rent</b>	With a limited income, paying a high rent may not leave enough money for other expenses, such as food, transportation and medical



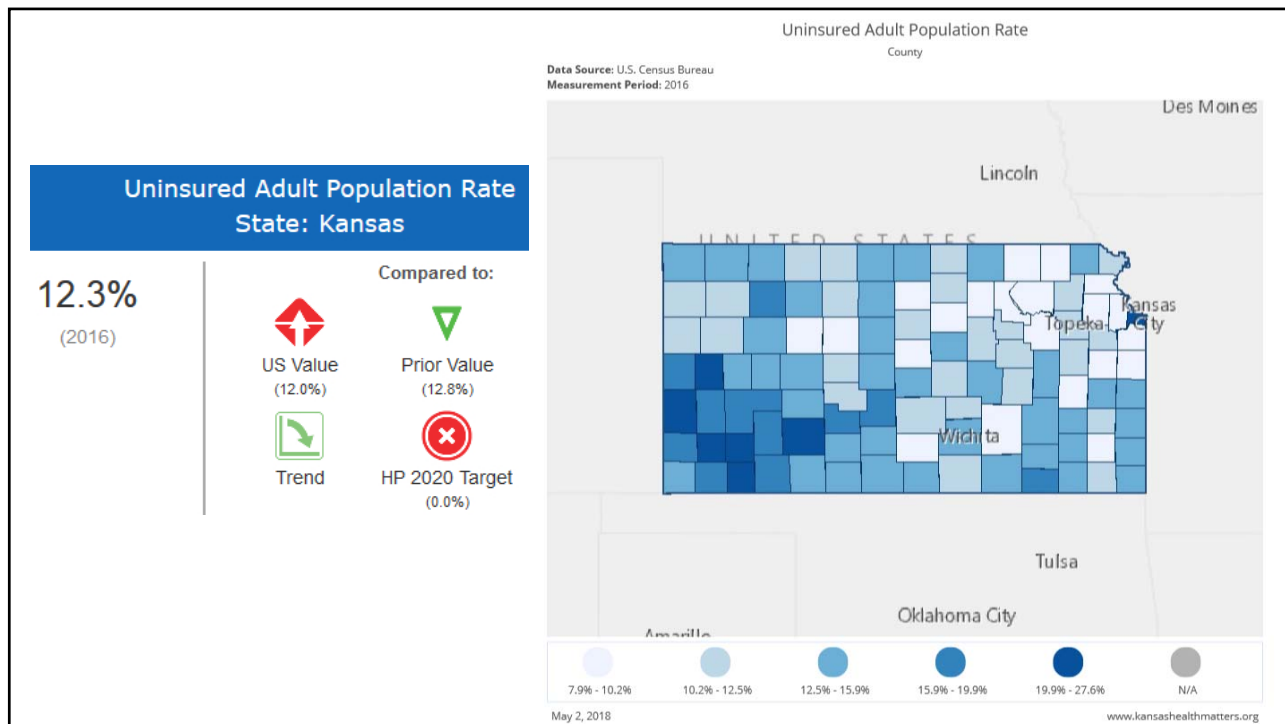
# Issue #2: Delayed care, use of ED, uncompensated care

## Potential reasons?



### KHM Indicators Related to 'Access to Care'

<b>Uninsured adult population rate</b>	Costly to access care without insurance
<b>Severe housing problems</b>	Environment may not be conducive to health; also shows ability to afford medical services



# Issue #3: Patient adherence

Patient Directives &  
Health Literacy

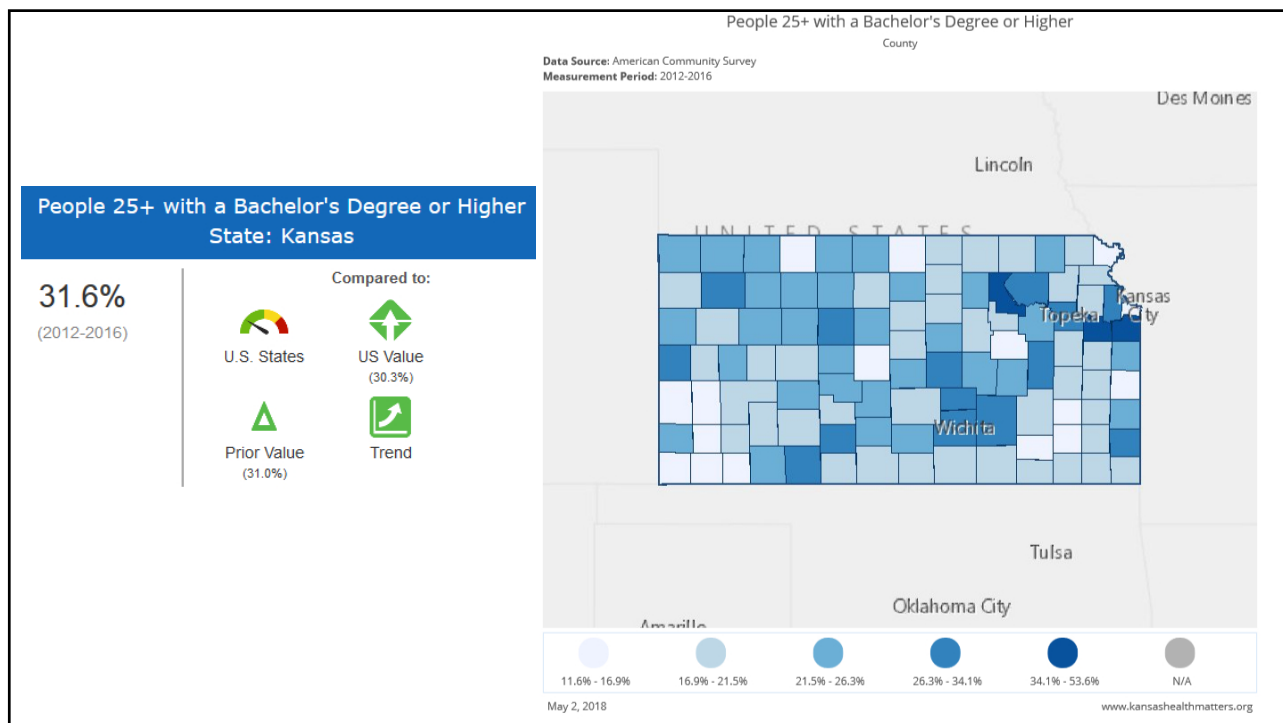


## Potential reasons?



# KHM Indicators Related to 'Health Literacy'

<p><b>People 25+ with a high school degree or higher*</b></p>	<p>Do patients understand the information? I.e., their health issues &amp; proper medication adherence? Is there follow-up necessary? Why?</p>
<p><b>People 25+ with a bachelor's degree or higher*</b></p>	
<p><b>Adults who have had a routine checkup</b></p>	<p>Do patients understand the importance of routine checkups?</p>





## Issue #4: Rural location (health geography)

Potential reasons?



### KHM Indicators Related to 'location'

<b>Grocery store density</b>	There are strong correlations between the density of grocery stores in a neighborhood and the nutrition and diet of its residents
<b>Fast food density</b>	Fast food outlets are more common in low-income neighborhoods and studies suggest that they strongly contribute to the high incidence of obesity and obesity-related health problems in these communities

# Clinical Profile: Rural location



## Screening for social needs

- Who
  - Students? Social Workers? Community Health Workers?
- What
  - Template? Create screener? Self-reporting?
- When
  - Intake? During appt? Discharge?
- Where
  - In person? Phone? Email? Text?



# Key take-aways

- Patients have complex social needs
- Providers have a role in addressing needs
- KHM can help identify those needs
- Choose 1 indicator to start screening
- Utilize resources; contact us for help



# Resources

1. Community Toolbox: <https://ctb.ku.edu/en>
2. Great Plains Quality Innovation Network: <http://greatplainsqin.org/>
3. Health Leads Screening Toolkit: <https://healthleadsusa.org/tools-item/health-leads-screening-toolkit/>
4. Institute for Healthcare Improvement Toolkits: <http://www.ihl.org/resources/Pages/Tools/default.aspx>
5. Kansas Health Matters: <http://www.kansashealthmatters.org/>



## Acronyms

- KHM – Kansas Health Matters
- KHI – Kansas Health Institute
- KHA – Kansas Hospital Association
- KFMC – Kansas Foundation for Medical Care
- KHF – Kansas Health Foundation
- KALHD – Kansas Association of Local Health Departments
- BRFS – Behavior Risk Factor Surveillance System
- KIC – Kansas Information for Communities
- Census Tract – an area roughly equivalent to a neighborhood. They generally encompass a population between 2,500 to 8,000 people

## Contact Us

### Victoria Miller

Kansas Health Matters VISTA  
[info@kansashealthmatters.org](mailto:info@kansashealthmatters.org)  
(785) 233-5443

### Beth Nech, MA

Project Manager  
[bnech@kfmc.org](mailto:bnech@kfmc.org)  
(785) 271-4120

