

KHC Office Hours Series:  
The Kansas Medicaid  
Presumptive Eligibility Program

Ashley Sage, Presumptive Eligibility Coordinator, KDHE-DHCF

KANSAS  
MEDICAL  
SOCIETY  
Established 1882

KHC

Kansas Healthcare  
COLLABORATIVE

KHA

Kansas Hospital  
ASSOCIATION

1

---

---

---

---

---

---

---

---

DISCLAIMER

All Kansas Healthcare Collaborative, Inc. (“KHC”) content and information in KHC’s publications, presentations, and on KHC’s website (“KHC Content”) are for informational and educational purposes only. KHC Content does not create any type of relationship with, or duty to, the reader, attendee, or user. KHC Content does not constitute legal, tax, business, professional, or personal advice. KHC disclaims any and all liabilities and warranties, express or implied, arising from users’ access and use of KHC Content.

KHC

Kansas Healthcare

2

2

---

---

---

---

---

---

---

---

Welcome!

- What clinic or facility do you work for?
- What city are you located in?
- What is your role?
- If you are an RHC or FQHC, please let us know

Hello  
my name is

KHC

Kansas Healthcare

3

3

---

---

---

---

---

---

---

---

Kansas Healthcare Collaborative (785) 235-0763  
www.khconline.org

1

4

[illegible]

5

[illegible]

6

[illegible]



### Content Outline

Topics For Discussion

- What is the Presumptive Eligibility Program?
- Targeted Populations
- Becoming a Qualified Entity
- Presumptive Eligibility Determination Steps

7

---

---

---

---

---

---

---

### Presumptive Eligibility Overview

What is it and what are the benefits of the program?

The Presumptive Eligibility (PE) Program is designed to provide uninsured individuals in the targeted populations with immediate and temporary coverage.

**Benefits of the Presumptive Eligibility Program**

- The program improves an individual's access to Medicaid and necessary services by providing a single streamlined application online to apply for coverage.
- Ensures the facility will be reimbursed for services rendered.
- Applicants are assigned an MCO (Managed Care Organization) of their choice, except for pregnant women who are fee for service.
- The benefits of the program are the same as those provided under the Medicaid group for which the individual is determined presumptively eligible.



8

---

---

---

---

---


---

---

### Targeted Populations


All our targeted populations must meet the following basic requirements:

- Must be a resident of Kansas.
- Must be a U.S. citizen or have an eligible immigration status.
- Can't have received Presumptive Eligibility in the last 12 months.
- Can't already be receiving Medicaid coverage.




**Children**

- Must be 18 or younger.
- Must meet income requirements.



**Aged Out of Foster Care**

- Must be between the ages of 18-26.
- Must have received Medicaid at the time of aging out of foster care.
- Does not have income requirements.



**Adult Parent/Caretaker Relatives**

- Must be a parent or caretaker relative caring for a dependent child in the home.
- Must meet income requirements.

9

---

---

---

---

---

---

---

Our team has made flyers for each one of our targeted populations that our Qualified Entities can use at their discretion.

### Presumptive Eligibility for Children

**Receive Coverage Today!**  
Presumptive Eligibility is a program designed to provide uninsured children with immediate and temporary medical coverage. This single streamlined application can go on to be processed for Medicaid to convert them to longer coverage.

**Requirements**

- Must be 18 or younger if dependent on the parent and not the head of the family, the child must be a U.S. citizen or have eligible immigration status.
- Must be a resident of Kansas.
- Must be a resident of Kansas.
- Cannot be already receiving Medicaid coverage.
- Cannot have already received presumptive eligibility coverage in the last 12 months.

**Apply Today!** 

10

---

---

---

---

---


---

---

---

### Targeted Populations:


#### Pregnant Women and BCC



**Pregnant Women**

- Must be female and pregnant.
- Must meet income requirements.
- Cannot have been determined eligible for Presumptive Eligibility for the current pregnancy.

*\*Pregnant women are fee for service and are not assigned an MCO during the Presumptive Eligibility period of coverage.*



**Breast and Cervical Cancer (BCC)**

- Must be female.
- Must be already receiving treatment.
- Must be between the ages of 21-64.

11

---

---

---

---

---

---

---

---

### Presumptive Eligibility for Pregnant Women (PE-PW)

Do you have low-income and are pregnant? This program might just be for you!

Presumptive Eligibility for pregnant women will cover the cost of early pregnancy doctor visits while you complete the full Medicaid application process. A fee SaverCard can help you with the single application to apply for both Presumptive Eligibility and Medicaid.

**Apply Today!**

**Requirements**

- Must be pregnant and female.
- Must be a U.S. citizen or have an eligible immigration status.
- Must be a resident of Kansas.
- Must meet income requirements.
- Cannot be already receiving Medicaid.
- Cannot have already received Presumptive Eligibility for the current pregnancy.



**Let's Talk About It**

### Presumptive Eligibility for Breast and Cervical Cancer

Presumptive Eligibility is a program designed to provide uninsured women diagnosed with breast or cervical cancer with immediate and temporary medical coverage.

**Requirements**

- Must be female.
- Must be currently receiving treatment for breast or cervical cancer.
- Must be between the ages of 21 and 64.
- Cannot already be receiving Medicaid.
- Cannot have received PE in the last 12 months.
- Must be a U.S. citizen or have an eligible immigration status.
- Must be a resident of Kansas.
- Must not have income requirements.



12

---

---

---

---

---

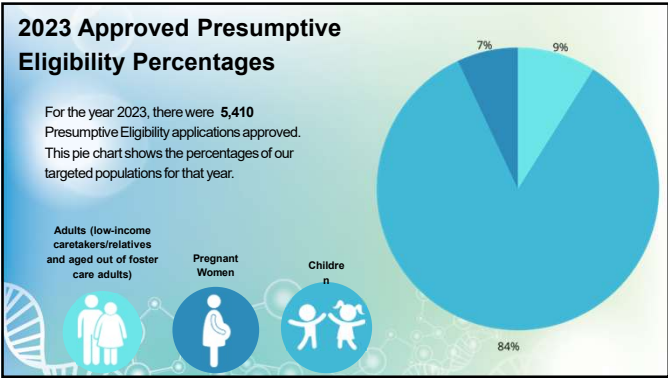
---

---

---

Kansas Healthcare Collaborative (785) 235-0763  
www.khconline.org

4



13

---

---

---

---

---

---

---

---



14

---

---

---

---

---

---

---

---

Statement of Interest

15

---

---

---

---

---

---

---

---

### Your Role as a Qualified Entity and Presumptive Eligibility Specialist

- Determine presumptive eligibility for uninsured consumers.
- Assist families with completing a KanCare application.
- Follow up on all requests for additional information from the KanCare Clearinghouse by acting as a facilitator for the applicants (if they so choose).
- Assist applicants with obtaining and submitting requests for additional information.
- Contacting the KanCare Clearinghouse with any questions regarding presumptive eligibility case issues.
- Serve as an advocate for presumptive eligibility applicants.

16

---

---

---

---

---

---

---

---

### Presumptive Eligibility Determination Steps

1

The QE will conduct PE determinations for individuals (prescreening questionnaire).

2

The QE staff will confirm through the Kansas Modular Medicaid System (KMMS) that individuals are not currently covered by existing Medicaid or CHIP programs. At this time, the QE should also check entity records for previous PE coverage within the last 12 months or within the same period of pregnancy (tracker spreadsheet).

3

When conducting PE determinations, the QE will rely on information provided by individuals. The QE will not request any documentation or verification of the information, nor will they require any information that is not needed for a PE determination.

4

The QE will determine PE based on the information entered in the PE Portal in accordance with PE training material and the Resource Manual.

5

The QE will provide the individuals with the appropriate documentation following their PE determination whether it is approved or denied; this will include a copy of the signed PE determination letter and a copy of the application.

6

The QE will summarize benefits and answer any questions.

7

The QE will provide the individuals with comprehensive assistance to ensure a successful completion of their KanCare application.

8

The QE will maintain a record of PE determinations for a minimum of five years from the date of the determination and make them available for a state or federal review or audit.

17

---

---

---

---

---

---

---

---

### PE TOOL KIT

	If Paid	If Self-Employed
Hourly	Hours worked per week, times rate of pay then multiply by 4.3 <i>(Example: 40 hours x \$10.00 = \$400.00)</i>	Hours worked per week, times rate of pay then multiply by 4.3 <i>(Example: 40 hours x \$10.00 = \$400.00)</i>
Weekly	Weekly gross income multiplied by 4.3 <i>(Example: \$400.00 x 4.3 = \$1,720.00)</i>	Weekly gross income multiplied by 4.3 <i>(Example: \$400.00 x 4.3 = \$1,720.00)</i>
Bi-weekly	Bi-weekly gross income multiplied by 8.6 <i>(Example: \$800.00 x 8.6 = \$6,880.00)</i>	Bi-weekly gross income multiplied by 8.6 <i>(Example: \$800.00 x 8.6 = \$6,880.00)</i>
Semi-Monthly	Multiply the semi-monthly gross amount by 2 <i>(Example: \$400.00 x 2 = \$800.00)</i>	Multiply the semi-monthly gross amount by 2 <i>(Example: \$400.00 x 2 = \$800.00)</i>
Yearly	Yearly gross income multiplied by 12 <i>(Example: \$4,000.00 x 12 = \$48,000.00)</i>	Yearly gross income multiplied by 12 <i>(Example: \$4,000.00 x 12 = \$48,000.00)</i>

plus, so much more.....

18

---

---

---

---

---

---

---

---



19

---

---

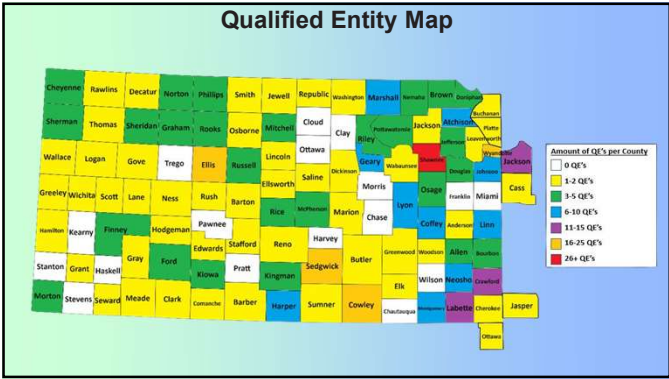
---

---

---

---

---



20

---

---

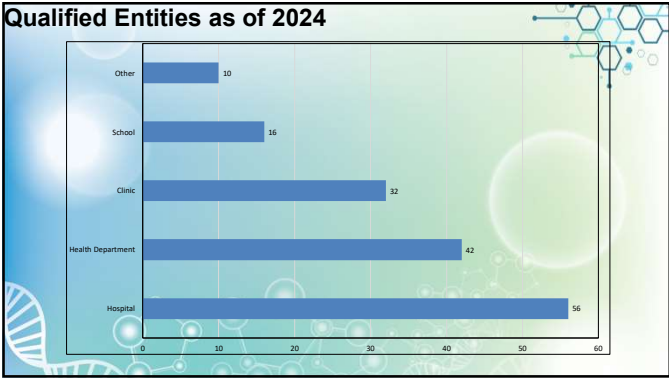
---

---

---

---

---



21

---

---

---

---

---

---

---



What our Qualified Entities  
had to say about Presumptive  
Eligibility

"We have advertised the PE program in various media outlets. We have a health fair in March and will be holding out fliers, income guidelines, and MOU completion sheets."

Barber County Health Department 2023

"What a wonderful service to have KDHHS helping struggling parents in these tough times. When I saw how cooperative everyone was they blew my former notion how many people hold back on childhood preventative services of care. We have even had people delay medical care because of the fear of having to pay with money they don't have."

Barber County Health Department 2023

"We have received a grant through KDHHS and the CDC. I believe that a workforce development grant that allows us to hire someone for a position that allows us to recruit, train and hire new public health staff. The purpose is to strengthen the workforce by building community partnerships in our county, increase policy development and provide engagement. We enjoy the partnership with you!"

Cherokee County Health Department 2023

"I bring individuals into our institution during programs, and I inform them to have immediate benefits for services such as immunizations, STI testing, and HIV."

Cherokee County Health Department 2023

"We have hired a patient resource representative who assists individuals who come to the health department for other services, to apply for PE if they currently do not have other health insurance. We explain to them that although they may not qualify for PE, there are many other programs that their application is sent to in the community that we can assist them. We are currently testing to provide information on other programs that Kancare offers in the form of pamphlets, and we are also discussing to help people that a program that will help them to have benefits that focus on their individual needs."

Cherokee Health Department 2023

"We have helped more moms and children get health insurance that have struggled before in understanding the language or felt it was too much work to go through and do."

Ellis County Health Department 2023

"Each scenario is a little different from the one before so when we come across a situation that is not clear as to what we need to put in, it can be challenging."

Ellis County Health Department 2023

22

---

---

---

---

---

---

---

---

---

---

MAR

\*Important Dates\*

Statement of Interest Due: March 4th  
First Meeting Dates: March 4th-11th  
MOU Start Date: May 1st  
Training Day: In person in May (TBD)

First meeting 30 minute meeting via Zoom  
MOU Required Documents  
PE Planning for how PE will work at their facility and who will be trained.

Second meeting/ Training day Schedule:  
Brief overview of the PE PowerPoint  
PE scenarios in the portal  
We make sure each person has access to the live PE environment and all credentials are set up

Please send your statement of interest to  
ashley.sage@ks.gov

23

---

---

---

---

---

---

---

---

---

---

Question Or Comment?  
Get In Touch!

(785)542-6689

ashley.sage@ks.gov  
KDHE.PERequest@ks.gov

https://www.kancare.ks.gov/

24

---

---

---

---

---

---

---

---

---

---

Kansas Healthcare Collaborative (785) 235-0763  
www.khconline.org

8





25

---

---

---

---

---

---

---

### Upcoming Education and Important Dates

- [3/6 KONZA Quarterly Webinar](#)
- [3/7 Navigating Rural Health Resources - Community Gardens/Food Insecurity featuring Kansas Promising Practices](#)
- [3/22 Access to Immunizations for Uninsured Adults](#)
- [3/27 KHC Office Hours - Sepsis Abstraction/Internal Validation: How do You Measure Up?](#)
- [4/1 QPP Data Submission Deadline for PY 2023](#)
- [4/3 Implementation of Telehealth Services in Public Libraries](#)
- [4/5 Recruitment and Retention Strategies for Rural and Underserved Communities – Renewing Your Culture](#)

26

---

---

---

---

---

---

---

Connect with us on:

[KHCali](#)  
 [@KHCali](#)  
 [Kansas Healthcare Collaborative](#)

→ Find contact info and more at: [www.KHOnline.org/staff](http://www.KHOnline.org/staff)

 Makena Rothick-Lippin Executive Director	 Mandy Johnson Senior Director, Programs	 Sara Borchert Director of Operations	 Eric Cook-Wiens Data & Measurement Director
 Liz Warren Quality Improvement Advisor	 Jill Dougherty Director of Education and Communications	 Alicia Gonzalez Health Care Quality Data Analyst	 Elin McGuire Quality Improvement Advisor
 Jenni Peters Quality Improvement Advisor	 Julia Pyle Quality Improvement Advisor	 Patty Thomas Quality Improvement Advisor	 Rebecca Wagner Project Specialist

27

---

---

---

---

---

---

---



28

---

---

---

---

---

---

---