


Kansas  
Hospital Engagement Network  
HEN 2.0 (cont'd)



Kansas Healthcare  
COLLABORATIVE

Kansas HEN Webinar  
October 28, 2015  
10:00 to 11:00 am CT

Kansas HEN 2.0 Kick-off  
October 28, 2015

### Agenda – HEN 2.0 (cont'd)

- ❖ Welcome and Opening Remarks
- ❖ HEN 2.0 enrollment and onboarding process
- ❖ Updates since October 6 HEN 2.0 Kick-off
- ❖ HRET Action Leader Fellowship
- ❖ Data and Measures
- ❖ Next steps
- ❖ What are your questions?
- ❖ Closing

KANSAS HEALTHCARE COLLABORATIVE 2

Introductions

## Presenters



**Michele Clark, MBA, CPHQ, ABC**  
Program Director



**Eric Cook-Wiens, MPH**  
Data and Measures Manager



**Rob Rutherford, BA**  
Senior Health Care Data Analyst




**Janie Rutherford**  
Director of Communications

KANSAS HEALTHCARE COLLABORATIVE 3

Hospital Engagement Network (HEN 2.0)

## Snapshot

- ❖ **CMS HEN 2.0 Project Period: 12 months**  
September 24, 2015 to September 23, 2016
- ❖ **Aim:**  
Reduce all-cause preventable harm by 40%;  
readmissions by 20%



### 11 months remain to reach goals!

KANSAS HEALTHCARE COLLABORATIVE 4

Hospital Engagement Network (HEN 2.0)

## Partnership for Patients: 17 HENs selected for HEN 2.0

|  |  |
|--|--|
| <ol style="list-style-type: none"> <li>1. <b>AHA/HRET</b> </li> <li>2. Ascension Health</li> <li>3. Carolinas HealthCare System</li> <li>4. Dignity Health</li> <li>5. Healthcare Assoc. of NY State</li> <li>6. Health Research Education Trust of NJ</li> <li>7. Hospital &amp; Healthsystem Association of PA</li> <li>8. IA Healthcare Collaborative</li> <li>9. LifePoint Health</li> </ol> | <ol style="list-style-type: none"> <li>10. MI Health and Hospital Association Health Found.</li> <li>11. MN Hospital Association</li> <li>12. OH Children's Hosp. Solutions for Pt. Safety</li> <li>13. OH Hospital Association</li> <li>14. Premier Inc.</li> <li>15. TN Hospital Assoc.</li> <li>16. VHA-UHC Alliance NewCo Inc.</li> <li>17. WA State Hospital Association</li> </ol> |
|--|--|

KANSAS HEALTHCARE COLLABORATIVE 5

Hospital Engagement Network (HEN 2.0)



American Hospital Association



HRET  
HEALTH RESEARCH & EDUCATIONAL TRUST  
In Partnership with AHA

AHA/HRET with 30+ state hospital associations, including Kansas



KANSAS HOSPITAL ASSOCIATION

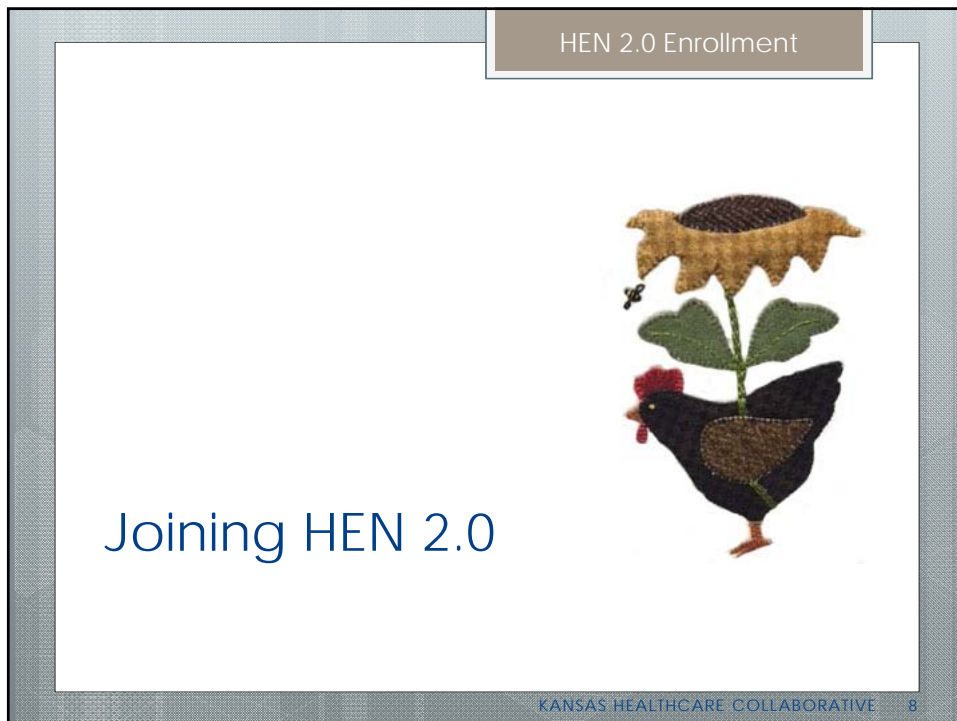
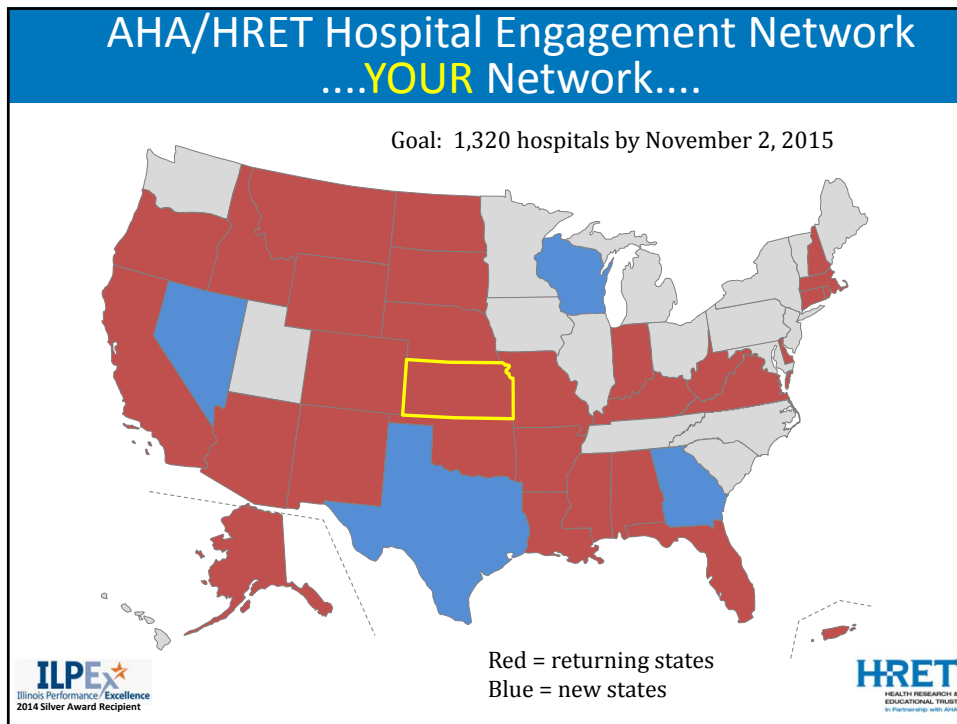


Kansas Healthcare Collaborative



KANSAS MEDICAL SOCIETY  
Established 1899

KANSAS HEALTHCARE COLLABORATIVE 6



HEN 2.0 Enrollment

**Step 1:**  
Commitment forms are due to KHC  
by Friday, October 30.

**89** Kansas hospitals have committed  
to HEN 2.0  
as of Tuesday (Oct. 27)

**3 days remain to join**

The last day hospitals can be added to the  
AHA/HRET HEN is  
Monday, November 2.

KANSAS HEALTHCARE COLLABORATIVE 9

Hospital Engagement  
Network (HEN 2.0)

**Next steps to join HEN 2.0**

2. Return HEN addendum (signed by CEO) to QHi at the Kansas Hospital Association.
3. Complete online Hospital Needs Assessment by Nov. 16.
4. Provide baseline data (if we don't have it already). Baseline data will be due by the end of January. (details pending)

KANSAS HEALTHCARE COLLABORATIVE 10

Quality Health Indicators (QHi)

## QHi addendum

Return one-page HEN addendum signed by CEO to KHA:

Contact:  
 Stuart Moore  
 QHi Program Manager  
 Kansas Hospital Association  
**FAX: 785-233-6955**  
  
 or call 785-276-3104

ADDENDUM  
QHI HOSPITAL INFORMATION SHARING AGREEMENT  
Kansas Hospital Engagement Network 2.0

(Participating Hospital) is a collaborating partner with the Kansas Healthcare Collaborative (KHC) in the Kansas Hospital Engagement Network (HEN) and data collection is a requirement for hospital participation. During the term of the Kansas HEN 2.0 program and for as long as Participating Hospital continues to participate in Kansas HEN as conducted by KHC, Participating Hospital will submit timely data for all applicable focus areas according to the definitions and parameters of the identified measures for the Kansas HEN quality improvement and patient safety program.

WHEREAS, Quality Health Indicators (QHI) is a data collection and benchmarking system utilized by KHC for the collection and reporting of information for the Kansas HEN; and

WHEREAS, Participating Hospital has previously signed a QHI Information Sharing Agreement (Agreement) with the Kansas Hospital Education & Research Foundation (KHERF);

THEREFORE, this Addendum, to the Agreement between Participating Hospital and KHERF, allows data submitted to QHI by Participating Hospital, as well as administrative data from the State Hospital Database, for all measures addressed for the Kansas HEN program to be shared, transferred, imported and reported as Participating Hospital's behalf with and among the KHC, Kansas Hospital Association (KHA), American Hospital Association (AHA), Health Research & Educational Trust (HRET), and the Center for Medicare and Medicaid Services Innovation Center (CMIC) and their respective data systems.

No patient-level data will be collected by QHI or shared with any third party.

This consent permission is supplemental to current and future information sharing agreements between KHERF and Participating Hospital. No modifications to this Addendum shall be binding unless stated in writing and signed by both parties.

|  |   |
|--|---|
| <p style="font-size: x-small; margin: 0;"><b>KANSAS HOSPITAL EDUCATION AND RESEARCH FOUNDATION</b></p> <p style="font-size: x-small; margin: 0;">Melissa L. Bangerford, CEO</p> <p style="font-size: x-small; margin: 0;">Date</p> | <p style="font-size: x-small; margin: 0;"><b>PARTICIPATING HOSPITAL</b></p> <p style="font-size: x-small; margin: 0;">Signature of CEO</p> <p style="font-size: x-small; margin: 0;">Date</p> |
|--|---|

Please return signed agreement by mail or fax to:  
 Stuart Moore, QHI Program Manager  
 Kansas Hospital Association  
 210 S.E. 9th Ave., Topeka, KS 66603-3905  
 FAX: 785-233-6955

KANSAS HEALTHCARE COLLABORATIVE 11

Hospital Engagement Network (HEN 2.0)

## Needs Assessment – by Nov 16

32 completed to date

<https://www.surveymonkey.com/r/KS-HEN2-needs>

- Basic hospital information
- HEN topic prioritization and measurement practices
- Quality improvement efforts
- Patient and family engagement practices
- Leadership and governance activities
- Disparities data collection efforts
- Cultural competency practices
- HEN contacts

KANSAS HEALTHCARE COLLABORATIVE 12

## Baseline Data

### – by end of January 2016

Baseline specifics are pending.

In general,

- ❖ HEN 2.0 is a continuation of HEN 1.0
- ❖ Preferred baseline: Calendar 2010
  - Next best: Next “oldest” year
    - Next best: 3Q2015
- ❖ CMS’ methodology for determining 40/20 is not yet known

*Mark your calendars:*

## Kansas HEN Meetings in Topeka

- **November 18, 2015**  
**Kansas HEN 2.0 In-person Collaborative Meeting**  
 KMS/KaMMCO Conference Center, Topeka
- **November 19, 2015**  
**2015-16 Kansas PFAC Collaborative Kickoff\*** (cohort 2)  
 KMS/KaMMCO Conference Center, Topeka  
*\*Hospital attendance at kick-off is required to participate.*

Agendas, registration link and travel reimbursement information will soon be distributed to primary and secondary contacts.

No registration fee. Eligible hospitals may be reimbursed roundtrip mileage and one hotel night expense. No meals or incidentals will be reimbursed.

Hospital Engagement Network (HEN 2.0)

## Hospital Site Visits

**Site visits are a crucial part of our HEN 2.0 strategy.**

**Goal:** Visit every hospital team by December 31

Michele and Susan are now scheduling site visits  
 Michele: NC and NE  
 Susan: SW, SC, SE and NW

To expedite scheduling, hospitals can indicate dates/times that would work well for you and your team:

<https://www.surveymonkey.com/r/KS-HEN-site-visit-dates>

KANSAS HEALTHCARE COLLABORATIVE 15

Hospital Engagement Network (HEN 2.0)

## Sample site visit agenda

Think outside the box: Have the people who can help at the table.

| Time       | Activity  | Who should attend?  |
|------------|---|---|
| 45 minutes | Leadership meeting <ul style="list-style-type: none"> <li>Intros and site visit purpose</li> <li>What's new in HEN 2.0, project highlights</li> <li>Share hospital successes in HEN 1.0</li> </ul>                              | <ul style="list-style-type: none"> <li>CEO and senior leaders</li> <li>HEN team leaders</li> <li>Core HEN team</li> </ul> |
| 60 minutes | HEN team meeting <ul style="list-style-type: none"> <li>Review needs assessment.</li> <li>Review HEN measures and how to submit data.</li> <li>Discuss hospital-selected topic(s).</li> <li>Review HEN 2.0 resources</li> </ul> | HEN team leaders<br>Core HEN team(s)  |
| 30 minutes | Develop Action Plan   | HEN team leaders with team  |
| 15 minutes | Debrief and next steps  | HEN team leaders and select senior leaders  |

KANSAS HEALTHCARE COLLABORATIVE 16



Kansas HEN: Agent of Change

**Become an *Agent of Change***  
***Together we will change health care in Kansas***

As a part of one of the most expansive patient safety initiatives in this country, you are an Agent of Change. Together we seek quality improvement through the Kansas HEN.

Agent of Change/Kansas Healthcare Collaborative wristbands will be delivered to all Kansas HEN hospitals during site visits in November and December.

Wear the wristband as a visual reminder to staff and patients that you are vigilant in seeking improved patient safety in Kansas.



KANSAS HEALTHCARE COLLABORATIVE 17

Hospital Engagement Network (HEN 2.0)

## Core Topics:

1. Adverse Drug Events (ADE)
2. Catheter-associated Urinary Tract Infections (CAUTI)
3. Central line-associated Blood Stream Infections (CLABSI)
4. Early Elective Deliveries and Obstetrical (OB) Harm
5. Injuries from Falls and Immobility
6. Hospital-Acquired Pressure Ulcers (HAPU)
7. Surgical Site Infections (SSI)
8. Venous Thromboembolisms (VTE)
9. Ventilator Associated Events (VAE)
10. Readmissions

KANSAS HEALTHCARE COLLABORATIVE 18

Hospital Engagement Network (HEN 2.0)

## Other Forms of Harm (pick 4)

1. Airway Safety
2. *Clostridium difficile* (*C. diff*)
3. Culture of Safety
4. Failure to Rescue
5. Iatrogenic Delirium
6. Radiation Exposure
7. **Sepsis**

HRET strongly encourages all hospitals in its HEN to focus on *C. diff* and Sepsis.

Kansas needs to select two more "Other" topics.

Please type into the chat which other two you think we should select.

KANSAS HEALTHCARE COLLABORATIVE 19

HEN 2.0 Project Scope and Goals

## Special Topics of Focus

- ❖ Patient and Family Engagement (PFE)
- ❖ Health Care Disparities (HCD)

KANSAS HEALTHCARE COLLABORATIVE 20

Resources and Educational Opportunities

## AHA/HRET HEN 2.0 Partners

- ❖ **Cynosure Health:**  
Clinical education
- ❖ **Institute for Healthcare Improvement (IHI):**  
Quality improvement education
- ❖ **University of Michigan (U of M):**  
CAUTI education
- ❖ Additional contractors for operations, logistics, communications, continuing education, etc.

KANSAS HEALTHCARE COLLABORATIVE 21

Hospital Engagement Network (HEN 2.0)

## HRET HEN Action Leader Fellowship

Lead by Institute for Healthcare Improvement

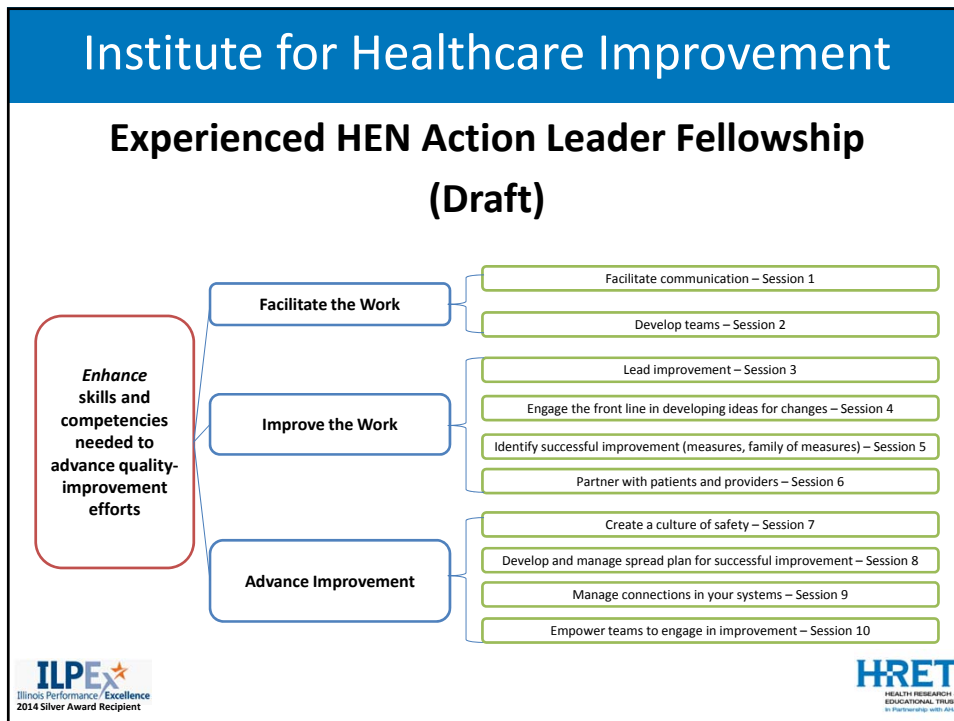
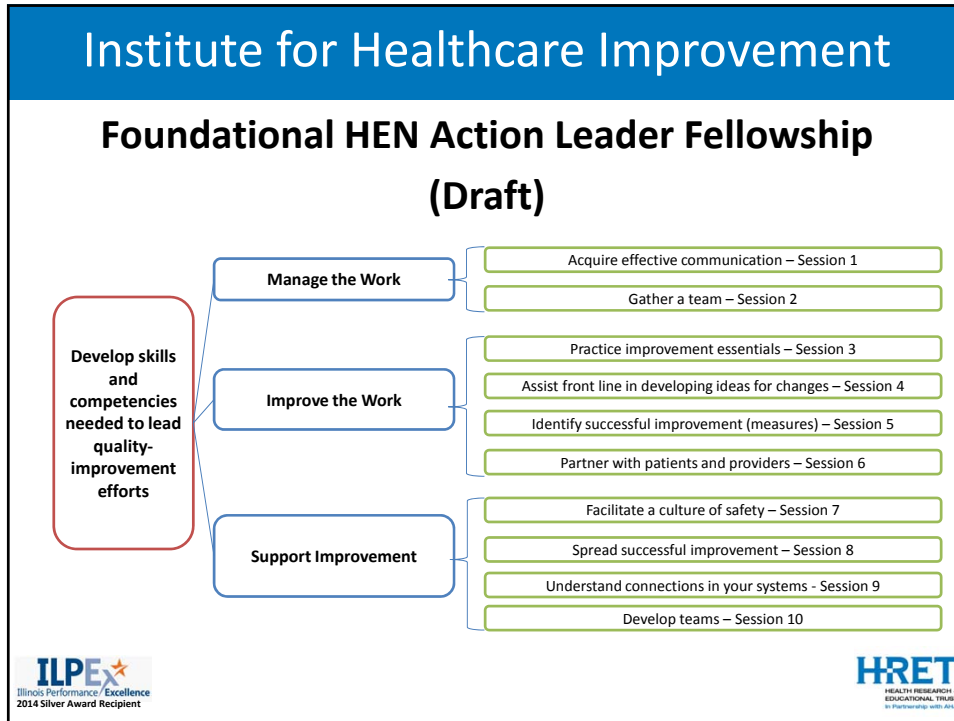
**First virtual sessions on Wednesday, November 4.**

Two tracks:

|                        |                    |
|------------------------|--------------------|
| <b>Foundational</b>    | <b>Experienced</b> |
| 11:00 a.m. to 12:00 pm | 12:30 to 1:30 p.m. |

**Register today at [www.hret-hen.org](http://www.hret-hen.org).**  
Go to "Upcoming Events" tab.

KANSAS HEALTHCARE COLLABORATIVE 22



Resources and Educational Opportunities

## AHA/HRET Action Leader Fellowship

- **Foundational HEN Action Leader Fellowship:**  
Track offered for new HEN participants or those new to quality improvement
- **Experienced HEN Action Leader Fellowship:**  
Track offered to experienced HEN participants or those who have been focused on quality improvement and patient safety for more than five years

Details for each include:

- Monthly webinars building on learnings throughout the project
- Action Learning Projects (ALPs) that will highlight individual or hospital progress toward HEN project goals
- Opportunity to meet and network with other Fellows at in-person national scientific meetings
- Sharing of ALPs on website upon completion
- Certificate of completion upon project submission

KANSAS HEALTHCARE COLLABORATIVE 25

Hospital Engagement Network (HEN 2.0)

## Additional resources

Change packages

- Being updated by HRET

Checklists

- Being updated with change packages

Data are foundational to everything

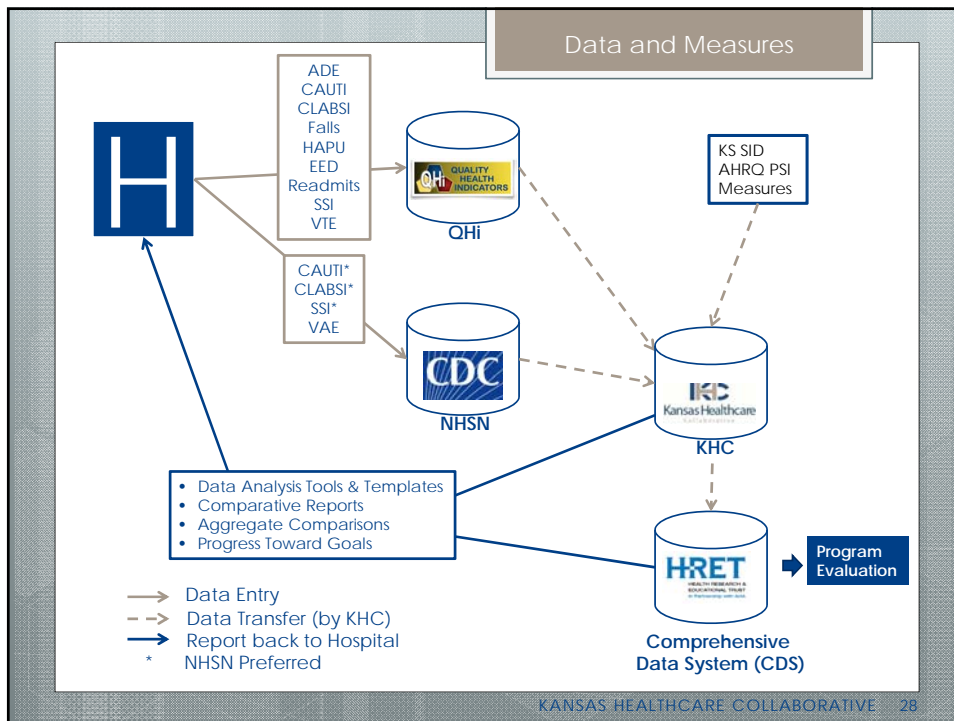
- Hospital speaker selection
- Calendar tailoring
- Updates on national data progress shared regularly

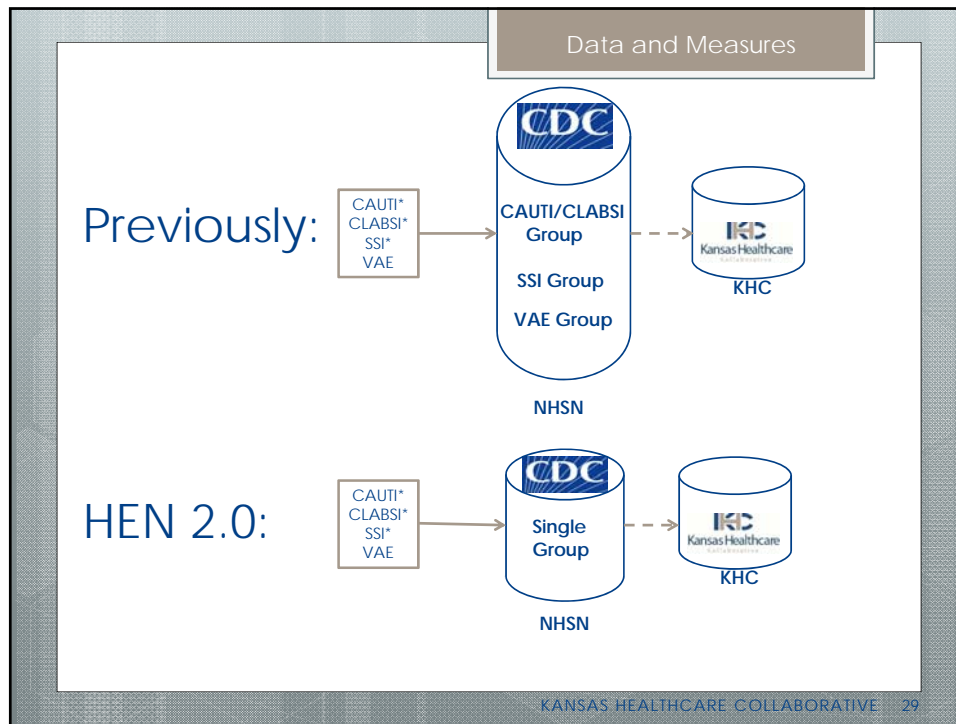
KANSAS HEALTHCARE COLLABORATIVE 26

# Kansas HEN Data and Measures Update

- HEN data submission and reports:  
(Process is different in Kansas!)
- Conferring NHSN to (updated) KHC group
- Program Evaluation Measures
- Data Submission Schedule
- Data Reports

**Rob Rutherford**  
Senior Data Analyst  
**Eric Cook-Wiens**  
Data and Measures Manager  
Kansas Healthcare Collaborative





Kansas HEN Data Report

## NHSN Group(s) – What’s New?

- ❑ Shifting to one group: Kansas Healthcare Collaborative (19423).
- ❑ “In-plan” reporting only!
  - ❑ Data requested from 2010 forward
  - ❑ CLIP, CAUTI, CLABSI maintained.
  - ❑ Ventilator Associated Events (VAE) added.
  - ❑ Surgical Site Infections (SSI) added for all in-patient locations. COLO, HYST, HPRO, and KPRO are the minimum.
  - ❑ *C. Diff.* laboratory ID events added
  - ❑ Hand Hygiene process measure added.

KANSAS HEALTHCARE COLLABORATIVE 30

Kansas HEN Data Report

## NHSN Group(s)

- ▣ **Joining** HEN 2.0 KHC NHSN Group:  
[www.khconline.org/files/Instructions\\_for\\_Joining\\_Hen2\\_KHC\\_NHSN\\_Group.pdf](http://www.khconline.org/files/Instructions_for_Joining_Hen2_KHC_NHSN_Group.pdf)
- ▣ **Updating** Existing KHC NHSN Group:  
[www.khconline.org/files/Instructions\\_for\\_Update\\_H2\\_KHC\\_NHSN\\_Group.pdf](http://www.khconline.org/files/Instructions_for_Update_H2_KHC_NHSN_Group.pdf)

KANSAS HEALTHCARE COLLABORATIVE 31

Data and Measures

## Program Evaluation Measures

| Focus Area    | CMS Required Evaluation Measure(s)   |
|---------------|--|
| <b>CAUTI</b>  | <ul style="list-style-type: none"> <li>• <b>NHSN<sup>1</sup> Reporting Facilities: CAUTI Standardized Infection Ratio (SIR) (NQF 0138)</b> <ul style="list-style-type: none"> <li>○ Intensive Care Unit (ICU) Units, excluding Neonatal Intensive Care Units (NICU)</li> <li>○ ICU + Other units</li> </ul> </li> <li>• <b>All Facilities: CAUTI Rates</b> (CAUTIs /1,000 catheter days, CAUTIs / 10,000 pt days)                             <ul style="list-style-type: none"> <li>○ ICU Units, excluding NICU</li> <li>○ ICU + Other inpatient units</li> </ul> </li> <li>• <b>All Facilities: Urinary-catheter utilization ratio</b> (catheter days / 10,000 pt days)</li> </ul> |
| <b>CLABSI</b> | <ul style="list-style-type: none"> <li>• <b>NHSN<sup>1</sup> Reporting Facilities: CLABSI SIR - (NQF 0139)</b> <ul style="list-style-type: none"> <li>○ ICU Units, including NICU</li> <li>○ ICU + Other units</li> </ul> </li> <li>• <b>All Facilities: CLABSI Rates</b> (CLABSIs / 1,000 central line days, CLABSIs / 10,000 pt days)                             <ul style="list-style-type: none"> <li>○ ICU Units, including NICU</li> <li>○ ICU + Other inpatient units</li> </ul> </li> <li>• <b>All Facilities: Central-line utilization ratio</b> (central line days / patient days)</li> </ul>   |

<sup>1</sup> Hospitals reporting CAUTI, CLABSI, SSI and VAE data may confer rights to their data to the Kansas Healthcare Collaborative (KHC) to meet the measurement requirements for this topic. All other hospitals are expected to follow the NHSN definitions of the measures and will submit numerators and denominators. Rates will be calculated based on numerators and denominators.

KANSAS HEALTHCARE COLLABORATIVE 32



Data and Measures

## Program Evaluation Measures (cont'd)

| Focus Area                             | CMS Required Evaluation Measure(s)  |
|--|---|
| <b>Falls</b>                           | <ul style="list-style-type: none"> <li>• Falls with injury (NQF 0202)</li> </ul>  |
| <b>Obstetrical (OB) adverse events</b> | <ul style="list-style-type: none"> <li>• Early elective deliveries (EED) (PC-01, NQF 0469)</li> <li>• Vaginal deliveries with instrument (Agency for Healthcare Research &amp; Quality [AHRQ] PSI 18)</li> <li>• Vaginal deliveries without instrument (AHRQ PSI 19)</li> </ul>   |
| <b>Pressure ulcers (PrU)</b>           | <ul style="list-style-type: none"> <li>• PrU rate, Stages 3+ (AHRQ PSI-03)</li> <li>• PrU prevalence (hospital-acquired), Stage 2+ (NQF 0201)</li> </ul>  |
| <b>Surgical site infections (SSI)</b>  | <ul style="list-style-type: none"> <li>• <b>NHSN<sup>1</sup> Reporting Facilities: SSI SIR (NQF 0753)</b> <ul style="list-style-type: none"> <li>○ Colon surgeries</li> <li>○ Abdominal hysterectomy</li> <li>○ Total hip replacements</li> <li>○ Total knee replacements</li> </ul> </li> <li>• <b>All Facilities: SSI Rates (# infections / # surgeries)</b> <ul style="list-style-type: none"> <li>○ Colon surgeries</li> <li>○ Abdominal hysterectomy</li> <li>○ Total hip replacements</li> <li>○ Total knee replacements</li> </ul> </li> </ul> |

<sup>1</sup> Hospitals reporting CAUTI, CLABSI, SSI and VAE data may confer rights to their data to the Kansas Healthcare Collaborative (KHC) to meet the measurement requirements for this topic. All other hospitals are expected to follow the NHSN definitions of the measures and will submit numerators and denominators. Rates will be calculated based on numerators and denominators.

KANSAS HEALTHCARE COLLABORATIVE 33

Data and Measures

## Program Evaluation Measures (cont'd)

|                                  |   |
|----------------------------------|---|
| <b>VAE</b>                       | <ul style="list-style-type: none"> <li>• Ventilator-Associated Condition (VAC)</li> <li>• Infection-Related Ventilator-Associated Complication (IVAC)</li> </ul>  |
| <b>VTE</b>                       | <ul style="list-style-type: none"> <li>• Post-Operative pulmonary embolism (PE) or deep vein thrombosis (DVT) rate (AHRQ PSI-12)</li> </ul>   |
| <b>Adverse drug events (ADE)</b> | <ul style="list-style-type: none"> <li>• ADEs per 1,000 patient days                             <ul style="list-style-type: none"> <li>• ADEs due to opioids</li> <li>• Excessive anticoagulation with warfarin</li> <li>• Hypoglycemia in patients receiving insulin</li> </ul> </li> </ul> |
| <b>Readmissions</b>              | <ul style="list-style-type: none"> <li>• All cause 30-day readmissions</li> </ul>   |

Other outcome and process measures will be added, as well as other topic measures.

<sup>1</sup> Hospitals reporting CAUTI, CLABSI, SSI and VAE data may confer rights to their data to the Kansas Healthcare Collaborative (KHC) to meet the measurement requirements for this topic. All other hospitals are expected to follow the NHSN definitions of the measures and will submit numerators and denominators. Rates will be calculated based on numerators and denominators.

KANSAS HEALTHCARE COLLABORATIVE 34

Data and Measures

## Retained Kansas HEN Measure

- ▣ Falls with or without injury.
  - ▣ HEN 1.0, BCBS of Kansas Quality-Based Reimbursement Program

KANSAS HEALTHCARE COLLABORATIVE 35

Data and Measures Update

## Kansas HEN 2015 Data Submission Schedule

| Outcome & Process Measures for HACs occurring in: | Readmissions for index discharges in, and SSI for procedures performed in: | Submission Due    |
|---|--|-------------------|
| December 2014                                     | November 2014  | January 31, 2015  |
| January   | December   | February 28       |
| February  | January  | March 31          |
| March   | February   | April 30          |
| April   | March  | May 31            |
| May   | April  | June 30           |
| June  | May  | July 31           |
| July  | June   | August 31         |
| August  | July   | September 30      |
| September   | August   | <b>October 31</b> |
| October   | September  | November 21       |
| November  | October  | December 31       |

KANSAS HEALTHCARE COLLABORATIVE 36

## HEN 2.0 & ICD-10

- ❑ Guidance on ICD-10 diagnostic and procedure codes for NHSN SSI reporting posted.

[www.cdc.gov/nhsn/acute-care-hospital/ssi/index.html](http://www.cdc.gov/nhsn/acute-care-hospital/ssi/index.html)

- ❑ AHRQ PSI – crosswalk for ICD-10 under development. Expected release late spring of 2016. Proposed specifications are available.

## HEN 2.0 Tools & Evaluation

- ❑ Harm across the board tool being improved – still under development.
- ❑ CMS will have an external evaluator for HEN 2.0
  - First “monitoring month” is October 2015.
  - Evaluation specifics (baseline, etc.) will be determined in collaboration with evaluator.

Data and Measures

## Kansas HEN Data Reports Changes and Notes

- Preliminary version to HEN contacts: **12/7/2015\***
- Final version to CEO, CNO, HEN contacts: **12/14/2015\***

If you have trouble with the Sharefile link, let us know, and we can send a PDF.

*\*Tentative.*

KANSAS HEALTHCARE COLLABORATIVE 39

Data and Measures

## Timeline for data work

**October**

- Continue monthly data submission on current measures
- Prepare for submitting NQF202: Falls with Injury
- Accept NHSN template update (if reporting to NHSN)
- Complete needs assessment survey upon enrollment

**November**

- New HEN measures are defined and implemented in QHi
- Monthly data submission for October monitoring period.
- Baseline data submitted by January 31. (period TBA)
- November 16 → Needs Assessment must be complete

**December and onward**

- HEN analytic data report
- Monthly data submission

KANSAS HEALTHCARE COLLABORATIVE 40

## National Education and Resources

- AHA/HRET Webinars
- Upcoming events
- AHA/HRET's website for HEN 2.0
- Resources, change packages
- List-Servs

**Michele Clark**  
Program Director  
Kansas Healthcare Collaborative  
[mclark@khconline.org](mailto:mclark@khconline.org)

Resources and Educational Opportunities

## AHA/HRET Webinars

**Topic webinars**

- AHA/HRET has designed shorter, mid-day webinars to help you incorporate education into your (busy!) schedules and to keep your focus in the unit
  - Approximately twice a week
  - No more than 90 minutes long
- Topics will be prioritized based on our direction from CMS and project data, including a needs assessment

**Data webinars**

- Will cover how you can use project data to inform quality improvement, including baseline statistics
- Approximately once a month

KANSAS HEALTHCARE COLLABORATIVE 42

Resources and Educational Opportunities

## Mark your calendar for upcoming AHA/HRET HEN 2.0 webinars

- **Readmissions**  
October 29  
11:00 to 12:30 p.m. CT
- **Sepsis**  
November 2  
11:00 to 12:30 p.m.
- **HEN 2.0 Fellowship Kick-off**  
November 4  
11:00 to 12:00 pm – Foundational  
12:30 to 1:30 pm - Experienced

Pre-register today at [www.hret-hen.org](http://www.hret-hen.org)  
National webinars will be recorded and available online at [www.hret-hen.org](http://www.hret-hen.org).

KANSAS HEALTHCARE COLLABORATIVE 43

Resources and Educational Opportunities

## Visit AHA/HRET's New Website!

A screenshot of the website [www.hret-hen.org](http://www.hret-hen.org). The page features the American Hospital Association logo on the left and the HRET logo on the right. A navigation menu includes 'About', 'Topics', 'Resources', 'Upcoming Events', and 'Engage'. A search bar is located in the top right. The main content area has a banner for 'Partnership for Patients' with the text: 'HEN 2.0 is a priority initiative designed to reduce all-cause, preventable harm by 40% and readmissions by 20%'. A sidebar on the left lists audience categories: Patients & Families, Senior Leadership & Governance, Physician Leadership, Unit-Based Improvement Teams, and Data & Informatics Teams.

KANSAS HEALTHCARE COLLABORATIVE 44

Resources and Educational Opportunities

## Educational Resources and Technical Assistance

- Updated change packages, checklists and implementation guide.
- Updated AHA/HRET HEN website:  
[www.hret-hen.org](http://www.hret-hen.org)  
 New: *Role-based* navigation and content for physicians, senior leaders, unit-based teams, and patients and families.
- State and national contacts for quality improvement support.

KANSAS HEALTHCARE COLLABORATIVE 45

Resources and Educational Opportunities

## LISTSERV® Update

**HEN 2.0 List-servs will begin in early November**  
 (after HEN 2.0 enrollment period closes)

Topics:

- Adverse Drug Event (ADE)
- Clinical Informatics
- Infections – includes CAUTI, CDI, CLABSI, SSI and VAE
- Early Elective Delivery and Obstetrical Adverse Event
- Patient & Family Engagement/Health Care Disparities
- Pressure Ulcers & Falls
- Readmissions
- Rural/Critical Access Hospitals
- Sepsis

Subscription type\*

Regular – real-time, immediate delivery of posting

Digest – daily delivery of a collection of messages

Subscribe at [www.hret-hen.org](http://www.hret-hen.org).

KANSAS HEALTHCARE COLLABORATIVE 46

Next Steps

## Next Steps

- ❑ **Return your Letter of Commitment to KHC by Friday.**  
(if not already done).
- ❑ **Assemble your team.**  
Recruit an executive champion, physician champions, a project lead, data support and multidisciplinary support from across your organization.
- ❑ **Schedule initial site visit.**
- ❑ **Access resources on [www.hret-hen.org](http://www.hret-hen.org) and [www.khconline.org](http://www.khconline.org).**
- ❑ **Register for events.**  
Watch the KHC Monthly Update and Upcoming Events on our websites for meetings and webinars that are relevant to you.
- ❑ **Celebrate!**  
You are embarking an extraordinary national initiative to improve care.

KANSAS HEALTHCARE COLLABORATIVE 47

www.khconline.org

## Your KHC Team 785-235-0763



**Kendra Tinsley**  
Executive Director  
[ktinsley@khconline.org](mailto:ktinsley@khconline.org)



**Michele Clark**  
Program Director  
[mclark@khconline.org](mailto:mclark@khconline.org)



**Eric Cook-Wiens**  
Data and Measurement Manager  
[ewiens@khconline.org](mailto:ewiens@khconline.org)



**Rhonda Lassiter**  
Executive Assistant  
[rlassiter@khconline.org](mailto:rlassiter@khconline.org)



**Susan Runyan**  
Program Director  
[srunyan@khconline.org](mailto:srunyan@khconline.org)



**Janie Rutherford**  
Communications Director  
[jrutherford@khconline.org](mailto:jrutherford@khconline.org)



**Rob Rutherford**  
Senior Health Care Data Analyst  
[rrutherford@khconline.org](mailto:rrutherford@khconline.org)

KANSAS HEALTHCARE COLLABORATIVE 48



Resources



*Discussion / Your Questions*

Contact Us

Main Office: (785) 235-0763  
General Email: [info@khconline.org](mailto:info@khconline.org)  
Website: [www.khconline.org](http://www.khconline.org)

KANSAS HEALTHCARE COLLABORATIVE 49