

Introducing the
KHC Hand Hygiene Collaborative


May 4, 2017
10:00 a.m.



KHC
Kansas Healthcare
Collaborative

623 SW 10th Ave. • Topeka, KS 66612 • (785) 235-0763 • www.khconline.org

 KANSAS MEDICAL SOCIETY
Established 1859

 KHA

 American Hospital Association

 HRET
HOSPITAL REFORMATION
RESTRUCTURING NETWORK



KHC Hand Hygiene Collaborative

Presenters


Kansas Healthcare
COLLABORATIVE


Qualaris
Healthcare Solutions, Inc.

Michele Clark Program Director mclark@khconline.org 785-235-0763 x1321	Rob Rutherford Senior Health Care Data Analyst rrutherford@khconline.org 785-235-0763 x1326	Daniel Bishop Co-Founder, CEO daniel@qualaris.com 602-448-9933
---	---	---

KHC HIIN • May 4, 2017

Kansas Healthcare Collaborative 2

KHC Hand Hygiene Collaborative

Agenda

- Welcome and Introduction to the KHC Hand Hygiene Collaborative
- Overview & demonstration of Qualaris Audit tool
- Collaborative enrollment process and next steps
- Q&A
- Reminder: May 5 is World Hand Hygiene Day

May 5, 2017Kansas Healthcare Collaborative3

KHC Hand Hygiene Collaborative

KHC HIIN Hand Hygiene Collaborative


Learn more!
Informational Webinar
May 4 • 10-10:45 a.m.

Qualaris Analyze Audit

Best Practices Checklist

Hand hygiene performed?	Yes	No	<input type="checkbox"/> Keep
Correct hygiene method used in the situation observed?	Yes	No	<input type="checkbox"/> Keep
If sanitizer, full quantity dispensed?	Yes	No	N/A
If soap, adequate scrubbing time performed?	Yes	No	N/A
Gloves used properly?	Yes	No	N/A
Nails 1/4 inch or shorter?	Yes	No	<input type="checkbox"/> Keep

Join this informational webinar with KHC and Qualaris Healthcare Solutions to learn more about this new collaborative to help track and improve hand hygiene within KHC HIIN hospitals. No-cost, easy-to-use, mobile software will be provided to each hospital for observation-based measurement to help improve clinical practices and care processes.



QualarisAudit
Software for improving best practices

KHC HIIN • May 4, 2017Kansas Healthcare Collaborative4

UP↑ CAMPAIGN

WAKE UP ↔ GET UP ↔ SOAP UP

SEDATION AND OPIOID SAFETY PLANS PROGRESSIVE MOBILITY FOR ALL PATIENTS HAND HYGIENE

www.hret-hiin.org/engage/up-campaign.shtml

HRET
HEALTH RESEARCH & EDUCATIONAL TRUST

Kansas Healthcare Collaborative 5

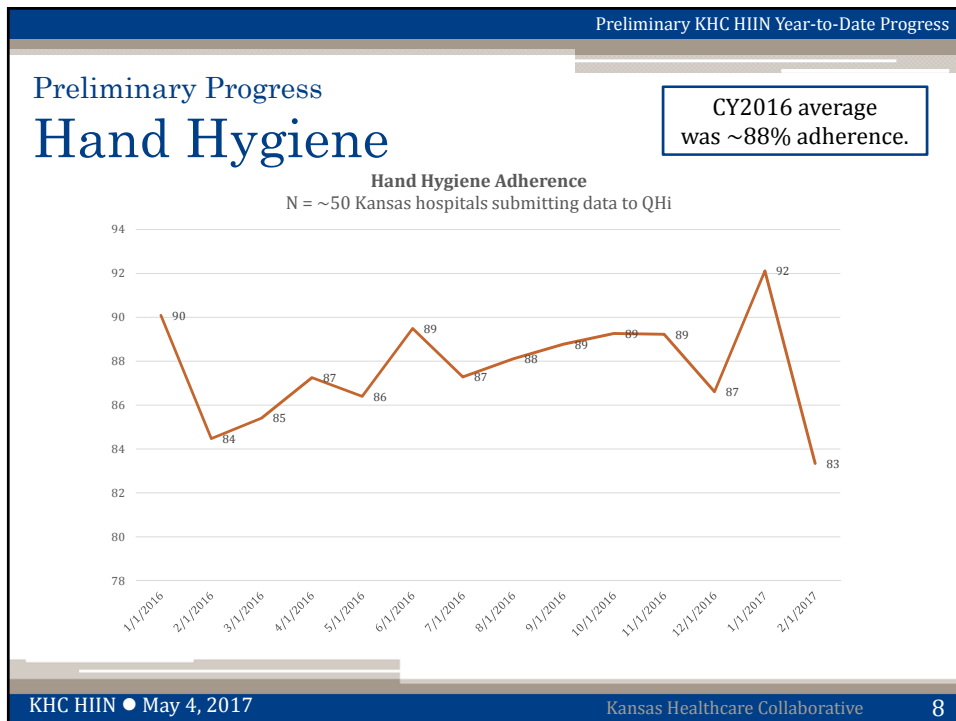
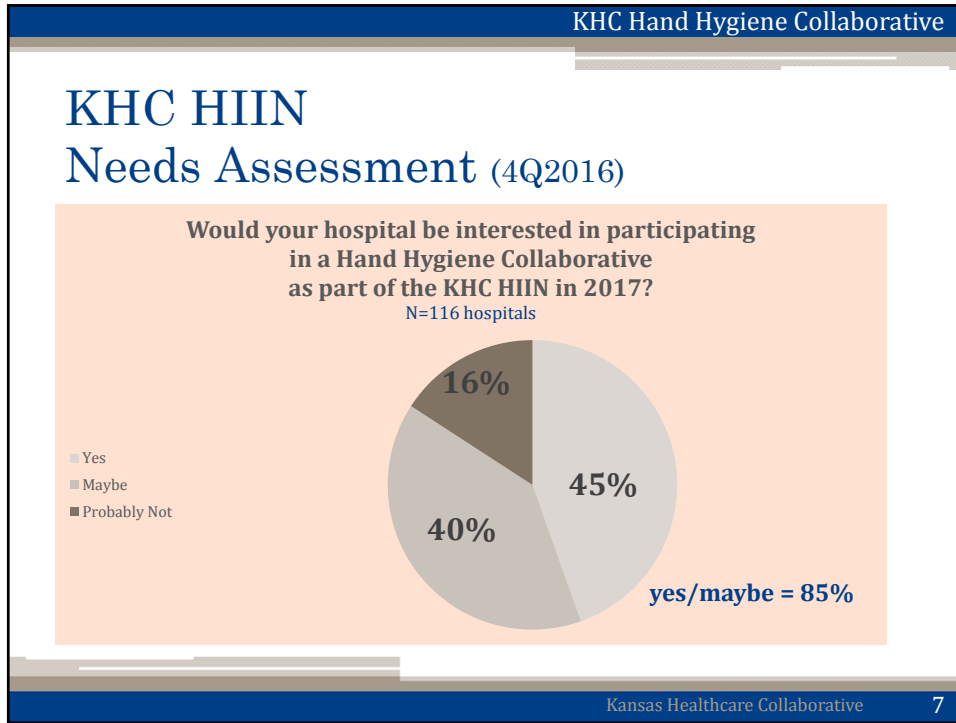
Hand Hygiene

CDI CAUTI SSI VAE CLABSI Sepsis MDRO

SOAP UP

American Hospital Association HRET
HEALTH RESEARCH & EDUCATIONAL TRUST

6



KHC Hand Hygiene Collaborative

Hand Hygiene Measure

A core process measure in HEN 2.0; expected to be continued in HIIN.

- Numerator: Hand hygiene performed consistent with guidelines
- Denominator: Total number of hand-hygiene observation opportunities

- Hand hygiene should be monitored according to NHSN protocols.
https://www.cdc.gov/nhsn/pdfs/pscmanual/12pscmdro_cdadcurrent.pdf#page=33

Kansas Healthcare Collaborative 9

KHC Hand Hygiene Collaborative

NHSN Protocols

A core process measure in HEN 2.0; expected to be continued in HIIN.

- Numerator: Hand hygiene performed = Total number of observed contacts during which a health care worker touched either the patient or inanimate objects in the immediate vicinity of the patient and appropriate hand hygiene was performed.
- Denominator: Total number of observed contacts during which a HCW touched either the patient or inanimate objects in the immediate vicinity of the patient and therefore, appropriate hand hygiene was indicated.

- Source:
https://www.cdc.gov/nhsn/pdfs/pscmanual/12pscmdro_cdadcurrent.pdf#page=33

Kansas Healthcare Collaborative 10



KHC Hand Hygiene Collaborative

Our aim is to provide KHC HIIN hospitals with valuable software resources paired with a collaborative learning environment for improving hand hygiene to $\geq 95\%$ by September 2018.

Benefits of KHC-sponsored software

- Save time by eliminating manual steps
- Replace paper-based audits with digital collection
- Get real-time data you can use for improvement
- Collaboratively improve with automated compliance benchmarking

KHC HIIN • May 4, 2017

Kansas Healthcare Collaborative 12

Replace paper-based audits with digital collection

Participating hospitals will be able to setup a KHC Hand Hygiene observation tool

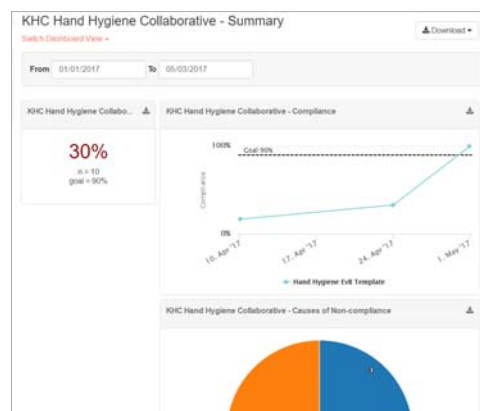
- Secure, web-based access
- Digital collection on mobile, tablets, and workstation browsers
- Unlimited users
- Ongoing support and training from Qualaris



Get real-time data you can use for improvement

Automatically analyzed results for immediate use

- Real-time dashboards
- One-click export (pdf, excel, images)
- Track housewide and unit-based performance
- Email-based report subscriptions



KHC Hand Hygiene Collaborative

Software Demonstration

KHC HIIN • May 4, 2017
Kansas Healthcare Collaborative 15

Collaboratively improve with automated compliance benchmarking

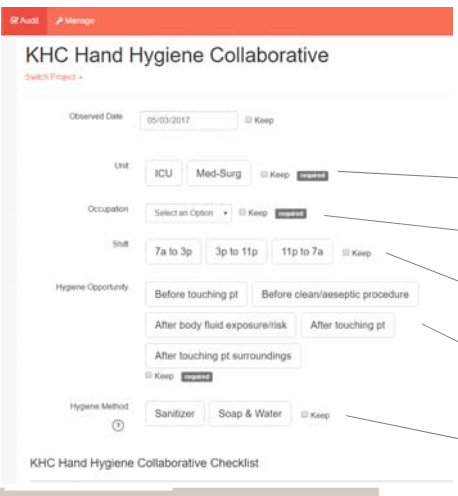
KHC Hand Hygiene Collaborative
Collaborative Benchmarking Report
monthly compliance, 4/1/2016 - 3/31/2017
Key: ● ≥ 90% ✖ < 90%

Overall Compliance	4/2016	5/2016	6/2016	7/2016	8/2016	9/2016	10/2016	11/2016	12/2016	1/2017	2/2017	3/2017	trend
Collaborative	● 93%	● 93%	✖ 89%	● 90%	✖ 88%	● 90%	✖ 89%	✖ 89%	✖ 89%	● 91%	● 90%	● 95%	
n	4185	4071	3699	3911	3465	3734	3178	2665	2891	3803	2909	2071	

Audit Compliance	4/2016	5/2016	6/2016	7/2016	8/2016	9/2016	10/2016	11/2016	12/2016	1/2017	2/2017	3/2017	trend
Hospital 1	● 100%	● 100%	● 100%	● 100%	● 100%	● 100%	-	-	-	-	-	-	
n	73	88	86	65	46	37	-	-	-	-	-	-	
Hospital 2	● 99%	● 100%	● 100%	● 100%	● 100%	● 99%	● 100%	● 100%	● 100%	● 100%	● 100%	● 100%	
n	161	154	132	148	208	175	186	230	182	188	188	112	
Hospital 3	-	-	-	-	-	-	-	-	-	-	-	✖ 83%	
n	-	-	-	-	-	-	-	-	-	-	-	18	
Hospital 4	-	-	-	-	-	-	-	-	-	✖ 87%	✖ 84%	✖ 83%	
n	-	-	-	-	-	-	-	-	-	226	268	160	
Hospital 5	● 99%	● 100%	● 99%	● 100%	● 92%	● 94%	● 98%	● 100%	● 98%	● 99%	● 95%	● 99%	
n	81	103	71	95	106	103	95	105	120	87	39	137	
Hospital 6	● 99%	● 98%	● 98%	● 99%	● 97%	● 99%	● 100%	● 100%	● 100%	● 99%	● 99%	● 99%	
n	830	810	588	482	299	333	392	209	359	758	247	281	
Hospital 7	-	-	● 90%	-	-	-	-	-	-	-	-	-	
n	-	-	10	-	-	-	-	-	-	-	-	-	

KHC HIIN • May 4, 2017
Kansas Healthcare Collaborative 16

KHC Hand Hygiene Template Design (1 of 2)



KHC Hand Hygiene Template Attributes
These elements (unit, occupation, shift, hygiene opportunity, hygiene method) will be used by hospitals to visualize and drill down in their data (e.g. compliance by unit, compliance by occupation)

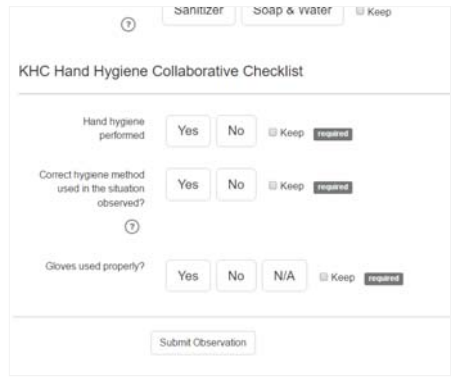
- Units will be customizable for each hospital
- Occupations will be customizable for each hospital
- Shifts will be customizable for each hospital
- The WHO 5 moments of HH will **NOT** be customized between sites
- The hygiene methods will **NOT** be customized between hospitals

Template Defaults

- Select an Option
- Admin
- Facilities
- Food
- Hospitality
- Lab
- MD-NP-PA
- NA
- Other
- Pharmacy
- Rehab
- RN
- RT
- Social Worker

KHC HIIN • May 4, 2017 Kansas Healthcare Collaborative 17

KHC Hand Hygiene Template Design (2 of 2)



KHC Hand Hygiene Template Checklist
These Yes/No checklist items will be used to calculate compliance from observed hand hygiene events.

- Checklist items can **NOT** be customized between sites

KHC HIIN • May 4, 2017 Kansas Healthcare Collaborative 18

Observation Software FAQs (1 of 2)

How does QualarisAudit™ work? How is it accessed? Where is my data stored?

- Software accessed through secure, encrypted webportal (no downloads required)
- Password-protected accounts tied to email
- Data is hosted online by Qualaris and available for one-click download at any time

What's required to get started with your software?

- After signup, you will receive an email-based invitation to create an account
- The software will be in "draft mode" and you can immediately test it without breaking anything
- Qualaris team to design and launch your custom tool. Set up typically takes 30-60 minutes.

Observation Software FAQs (2 of 2)

How does Qualaris support multi-site systems and IDNs?

Qualaris can work with system leaders to support tailored implementation plans and provide easy and automated collaborative benchmarking and best practice comparisons across multiple sites.

Can I add room numbers, caregiver names, medical record numbers, or free text?

No, we cannot accept any PHI or info that might allow Qualaris to identify the patient or their caregiver. The system is designed to make it easy, free, and affordable to spot-check many processes and protocols, not to document patient care or for individual performance evaluation.

Does QualarisAudit™ support other types of tools besides compliance Y/N?

No, with the exception of custom proposals. QualarisAudit™ is first and foremost focused on making process improvement easy, free, and affordable. However, Qualaris will support high impact, custom projects via tailored proposals and quotes.

KHC Hand Hygiene Collaborative

Available through September 27, 2018:

- Use of Qualaris Hand Hygiene observation tool, at no cost to participating hospitals
- Technical assistance by KHC, Qualaris and hospital improvement advisors
- Collaborative data reports
- Up to five virtual collaborative meetings (Dates and times TBA)
 - Peer-to-peer education, coaching and support
 - Sharing of best practices for increasing hand hygiene awareness, culture of safety, compliance, and more.

Next Steps

Complete the online enrollment form to join the KHC Hand Hygiene collaborative:

<https://www.surveymonkey.com/r/khc-hh-collab>

- Upon enrollment, Qualaris will contact you by email for next steps to provide access to the software and to customize for your facility.
- KHC will follow up with additional information for participating in the collaborative.

FAQs

- Q. What is the enrollment period for the collaborative?
- A. We encourage hospitals to enroll by May 31, so that we may officially start the collaborative in June. Hospitals may continue to enroll after that date.
- Q. If we sign up now, can we go ahead and start using the Qualaris tool right away?
- A. Yes!



FAQs

- Q. If we collect data through the Qualaris tool, will we still need to enter our HIIN data in QHi or NHSN for the hand hygiene measure?
- A. Yes. We anticipate the Qualaris tool will help streamline the data collection process but does not replace the data submission process at this time.



KHC Hand Hygiene Collaborative



Michele Clark
Program Director
mclark@khconline.org
785-235-0763 x1321


Daniel Bishop
Co-Founder, CEO
daniel@qualaris.com
602-448-9933

KHC HIIN – April 26, 2017 Kansas Healthcare Collaborative 25

Reminder

May 5 is World Hand Hygiene Day

This year for Hand Hygiene Day on May 5, the HRET HIIN is creating a collage of photos capturing examples of good hand hygiene practices. The collage will represent our collective efforts practicing hand hygiene, reducing infections and improving patient care.



World Health Organization
Save Lives: Clean Your Hands
5 May 2017
'Fight antibiotic resistance – it's in your hands'

Tools and resources at:
www.who.int/gpsc/5may/2017
* Posters * Photographs * Slide set
* Banners * Engagement/activity tool for IPs
and more!

KHC HIIN • May 4, 2017 Kansas Healthcare Collaborative 26